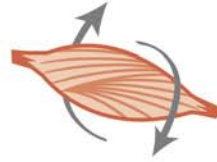


# Boxer 26

**ADULT**  
> 15 months



## Muscle dynamism

Ensures the maintenance of muscle mass and helps maintain healthy joints thanks to optimal protein content (26%), a high level of L-carnitine, chondroitin sulphate, glucosamine and omega 3 fatty acids (EPA-DHA).

### ▼ Cardiac Tone

Contributes to optimal heart function and helps maintain good myocardial contraction.

### ▼ Support cell defences

Helps maintain vitality thanks to an exclusive complex of lycopene, polyphenols of grape and green tea, vitamins E & C.

### ▼ Special brachycephalic jaw

Facilitates prehension and encourages the Boxer to chew thanks to an ergonomically adapted kibble.



Exclusive kibble



available in  
3kg and 12kg

## RECOMMENDED DAILY INTAKE (in g)

### Adult weight (in kg)

Average density: 340 g/l	[in g]	Needs	24	26	28	30	32	34	36	38
		Reduced <sup>(1)</sup>		325	345	365	380	400	420	435
	Normal		355	380	400	420	440	460	480	500
	Increased <sup>(2)</sup>		390	410	435	460	480	500	525	545
	Extra <sup>(3)</sup>		455	480	510	535	560	585	610	635
	[in cup]	Needs	24	26	28	30	32	34	36	38
	Reduced <sup>(1)</sup>		3+6/8	4	4+2/8	4+3/8	4+5/8	4+7/8	5	5+2/8
	Normal		4+1/8	4+3/8	4+5/8	4+7/8	5+1/8	5+3/8	5+4/8	5+6/8
	Increased <sup>(2)</sup>		4+4/8	4+6/8	5	5+3/8	5+4/8	5+6/8	6+1/8	6+2/8
	Extra <sup>(3)</sup>		5+2/8	5+4/8	5+7/8	6+2/8	6+4/8	6+6/8	7	7+3/8

1 cup = 240ml

(1) No activity, neutered, overweight.

(2) High activity, cold environment, slim, or a group of dogs.

(3) A very large group of dogs.

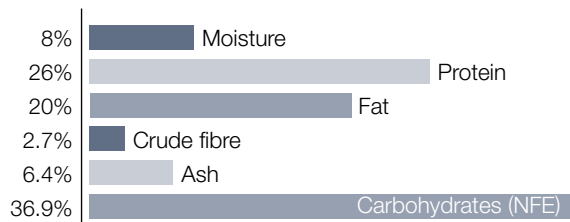


**Ingredients:** rice, vegetable protein isolate\*, animal fats, dehydrated poultry meat, maize, dehydrated pork protein, hydrolysed animal proteins, minerals, vegetable oils (soya and copra), vegetable fibres, beet pulp, fish oil, tomato (source of lycopene), sodium polyphosphate, yeast extract (source of manno-oligo-saccharides), taurine, hydrolysed crustaceans (source of glucosamine), L-carnitine, DL methionine, L-tyrosine, marigold extract (source of lutein), green tea and grape extracts (source of polyphenols), hydrolysed cartilage (source of chondroitin).

\*L.I.P.: protein selected for its very high assimilation.

## AVERAGE ANALYSIS

### GUARANTEED ANALYSIS



### OTHER GUARANTEES

Starch	%	33
Dietary fibre	%	6.6
Omega 6	%	3.25
Omega 3	%	0.79
EPA + DHA	%	0.41

### MINERALS

Calcium	%	0.8	Copper	mg/kg	20
Phosphorus	%	0.5	Iron	mg/kg	200
Sodium	%	0.2	Manganese	mg/kg	70
Potassium	%	0.8	Zinc	mg/kg	220
Magnesium	%	0.07	Selenium	mg/kg	0.13
			Iodine	mg/kg	2.6

### VITAMINS

Vit. A	IU/kg	30000
Vit. D3	IU/kg	700
Vit. E	mg/kg	750
Vit. C	mg/kg	300
B1 (Thiamin)	mg/kg	50
B2 (Riboflavin)	mg/kg	50
Calcium pantothenate	mg/kg	148
B6 (Pyridoxine)	mg/kg	77
B7 (Inositol)	mg/kg	1000
B12 (Cyanocobalamin)	mg/kg	0.15
Niacin	mg/kg	500
Biotin	mg/kg	2.9
Folic acid	mg/kg	15.6
Choline	mg/kg	2500

### OTHER NUTRIENTS

Taurine	%	0.25
L-Carnitine	mg/kg	830
Glucosamine + chondroitin	mg/kg	1100
Lutein	mg/kg	5

### METABOLISABLE ENERGY (ME)

ME (NRC 74)	kcal/kg	4316
ME (NRC 85)	kcal/kg	3902
ME (Measured)	kcal/kg	4145