

Dachshund 28

ADULT
> 10 months



Joint support

Helps support the joints in the Dachshund's short limbs and his vertebrae which are subjected to severe mechanical stresses, and maintain optimal hydration of the cartilage thanks to the combined action of glucosamine, chondroitin and the high level of EPA-DHA fatty acids.

▾ Muscle tone and ideal weight

Maintains muscle tone and combats excess weight gain.

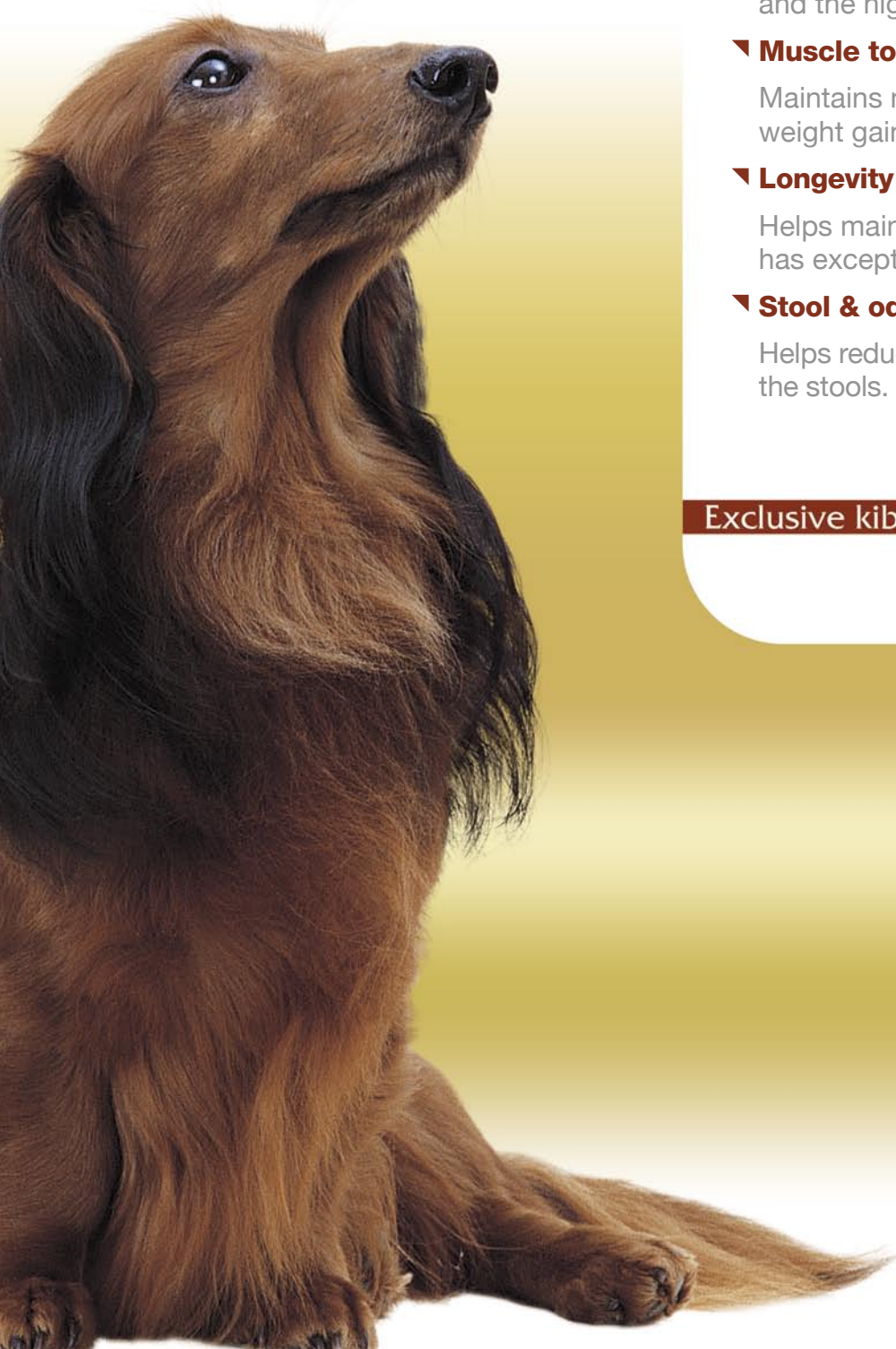
▾ Longevity programme

Helps maintain vitality in the Dachshund, which has exceptional longevity.

▾ Stool & odour reduction



Helps reduce the volume and odour of the stools.

Exclusive kibble



RECOMMENDED DAILY INTAKE (in g)

Adult weight (in kg)

Average density: 300 g/l	[in g]	Needs	2	4	6	8	10	12
		Reduced ⁽¹⁾	50	85	115	140	165	190
	Normal	55	95	125	155	185	210	
	Increased ⁽²⁾	60	105	140	170	200	230	
	Extra ⁽³⁾	75	120	165	205	240	275	
	[in cup]	Needs	2	4	6	8	10	12
		Reduced ⁽¹⁾	6/8	1+1/8	1+5/8	2	2+2/8	2+5/8
		Normal	6/8	1+3/8	1+6/8	2+1/8	2+5/8	2+7/8
		Increased ⁽²⁾	7/8	1+4/8	2	2+3/8	2+6/8	3+2/8
		Extra ⁽³⁾	1	1+5/8	2+2/8	2+7/8	3+3/8	3+7/8

1 cup = 240ml

(1) No activity, neutered, overweight.

(2) High activity, cold environment, slim, or a group of dogs.

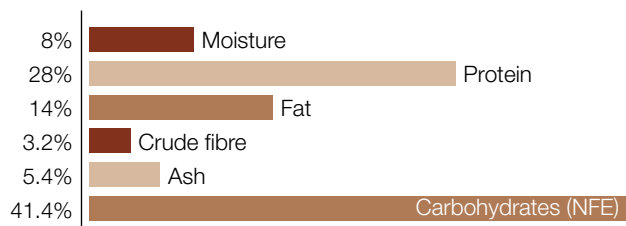
(3) A very large group of dogs.



Ingredients: rice, dehydrated poultry meat, vegetable protein isolate*, animal fats, hydrolysed animal proteins, vegetable fibres, beet pulp, minerals, vegetable oils (soya and borage), fish oil, fructo-oligo-saccharides, sodium polyphosphate, taurine, hydrolysed crustaceans (source of glucosamine), green tea and grape extracts (source of polyphenols), marigold extract (source of lutein), L-carnitine, hydrolysed cartilage (source of chondroitin).
*L.I.P.: protein selected for its very high assimilation.

AVERAGE ANALYSIS

GUARANTEED ANALYSIS



OTHER GUARANTEES

Starch	%	37.4
Dietary fibre	%	7.2
Omega 6	%	2.5
Omega 3	%	0.5
EPA + DHA	%	0.27

MINERALS

Calcium	%	0.8	Copper	mg/kg	20
Phosphorus	%	0.6	Iron	mg/kg	150
Sodium	%	0.7	Manganese	mg/kg	75
Potassium	%	0.6	Zinc	mg/kg	240
Magnesium	%	0.07	Selenium	mg/kg	0.18
			Iodine	mg/kg	2.8

VITAMINS

Vit. A	IU/kg	33000
Vit. D3	IU/kg	800
Vit. E	mg/kg	1000
Vit. C	mg/kg	300
B1 (Thiamin)	mg/kg	56
B2 (Riboflavin)	mg/kg	56
Calcium pantothenate	mg/kg	165
B6 (Pyridoxine)	mg/kg	86
B7 (Inositol)	mg/kg	1100
B12 (Cyanocobalamin)	mg/kg	0.17
Niacin	mg/kg	500
Biotin	mg/kg	3.3
Folic acid	mg/kg	17.5
Choline	mg/kg	1500

OTHER NUTRIENTS

Taurine	%	0.3
L-Carnitine	mg/kg	100
Grape & Green tea Polyphenols	mg/kg	150
Glucosamine + chondroitin	mg/kg	700
Lutein	mg/kg	5

METABOLISABLE ENERGY (ME)

ME (NRC 74)	kcal/kg	4036
ME (NRC 85)	kcal/kg	3619
ME (Measured)	kcal/kg	3860